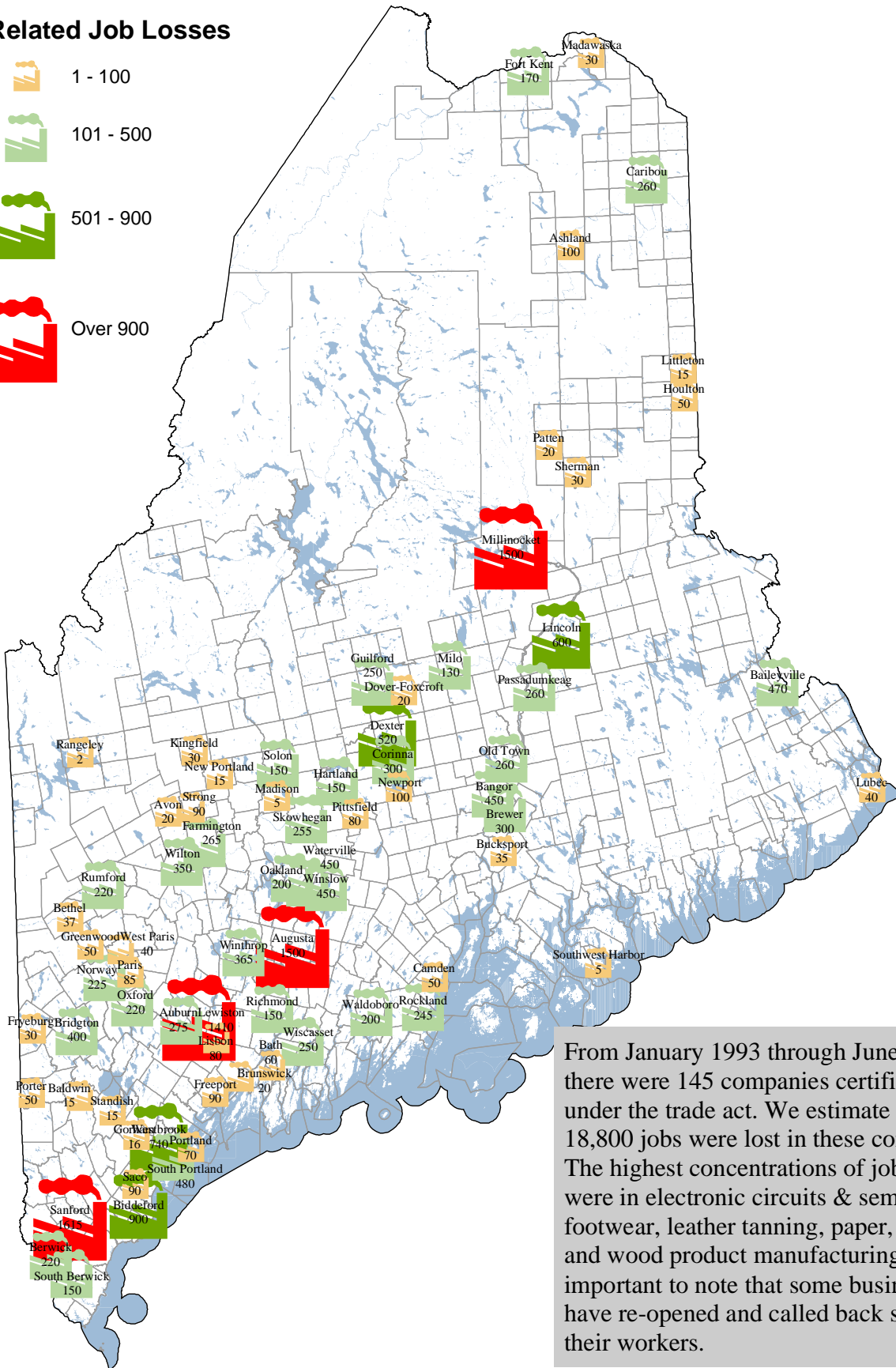
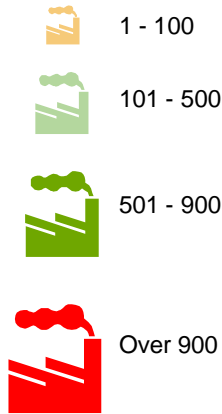


Trade-Related Manufacturing Job Losses in Maine, January 1993 to June 2005

Trade-Related Job Losses



From January 1993 through June 2005 there were 145 companies certified under the trade act. We estimate that 18,800 jobs were lost in these companies. The highest concentrations of job losses were in electronic circuits & semiconductors, footwear, leather tanning, paper, textile, and wood product manufacturing. It is important to note that some businesses have re-opened and called back some of their workers.